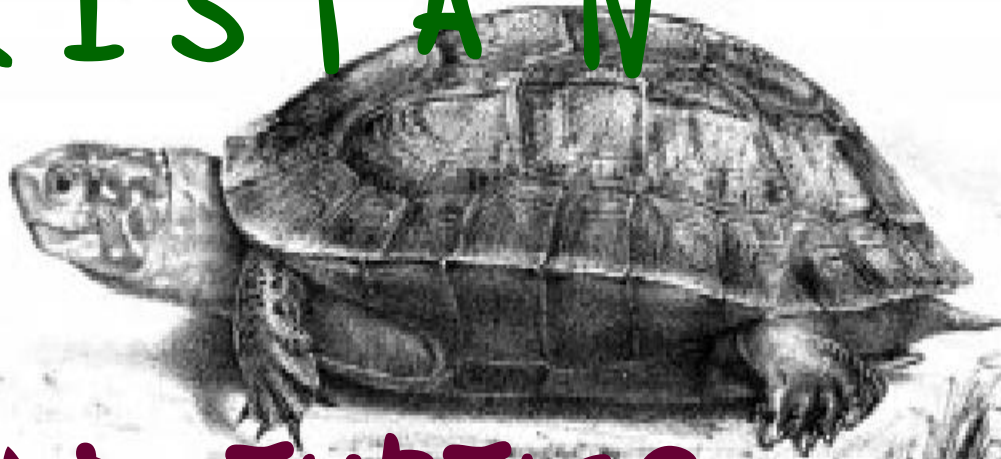


PAKISTAN



LAND TURTLES

+

CROCS



سرزمین پاکستان کے مینڈک اور خزندے

پروفیسر ڈاکٹر محمد شریف خان



الدوسانی بورڈ
209 - ایف مال، لاہور

Herpetological laboratory

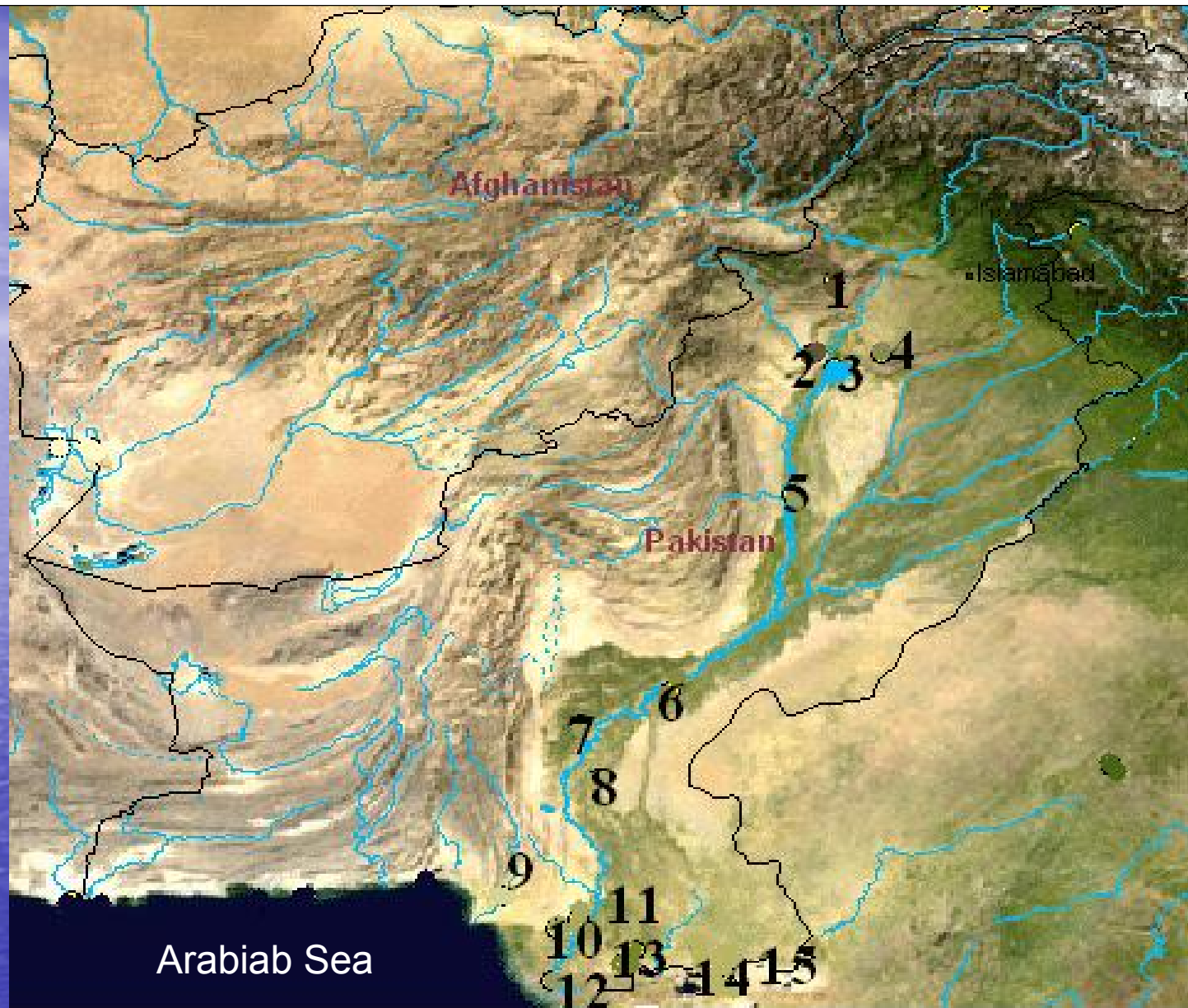


Fig. 1. Pakistan: Locations of Inland wetlands. 1. Tanda Dam; 2. Thanedar Barrage; 3. Chasma Barrage; 4. Uchhal; 5. Tansa Barrage; 6. Indus Dolphin reserve; 7. Drigh lake; 8. Dah Akro-II; 9. Hab Dam; 10. Heleji lake; 11. Kinjhar lake; 12. Indus Delta; 13. Jubho lagoon; 14. Nurri lagoon; 15. Rann of Kutch. (Modified from Wetland International).



LAND TURTLES



Ideal fresh-water habitat for turtles

Family GEOEMYDIDAE
Genus *Geoclemys*



Geoclemys hamiltonii (Gray, 1831)

Genus *Hardella*



***Hardella thurjii* Gray, 1831**

Genus *Pangshura*



Kachuga tecta

Pangshura tectum (Bell in: Gray, 1831)

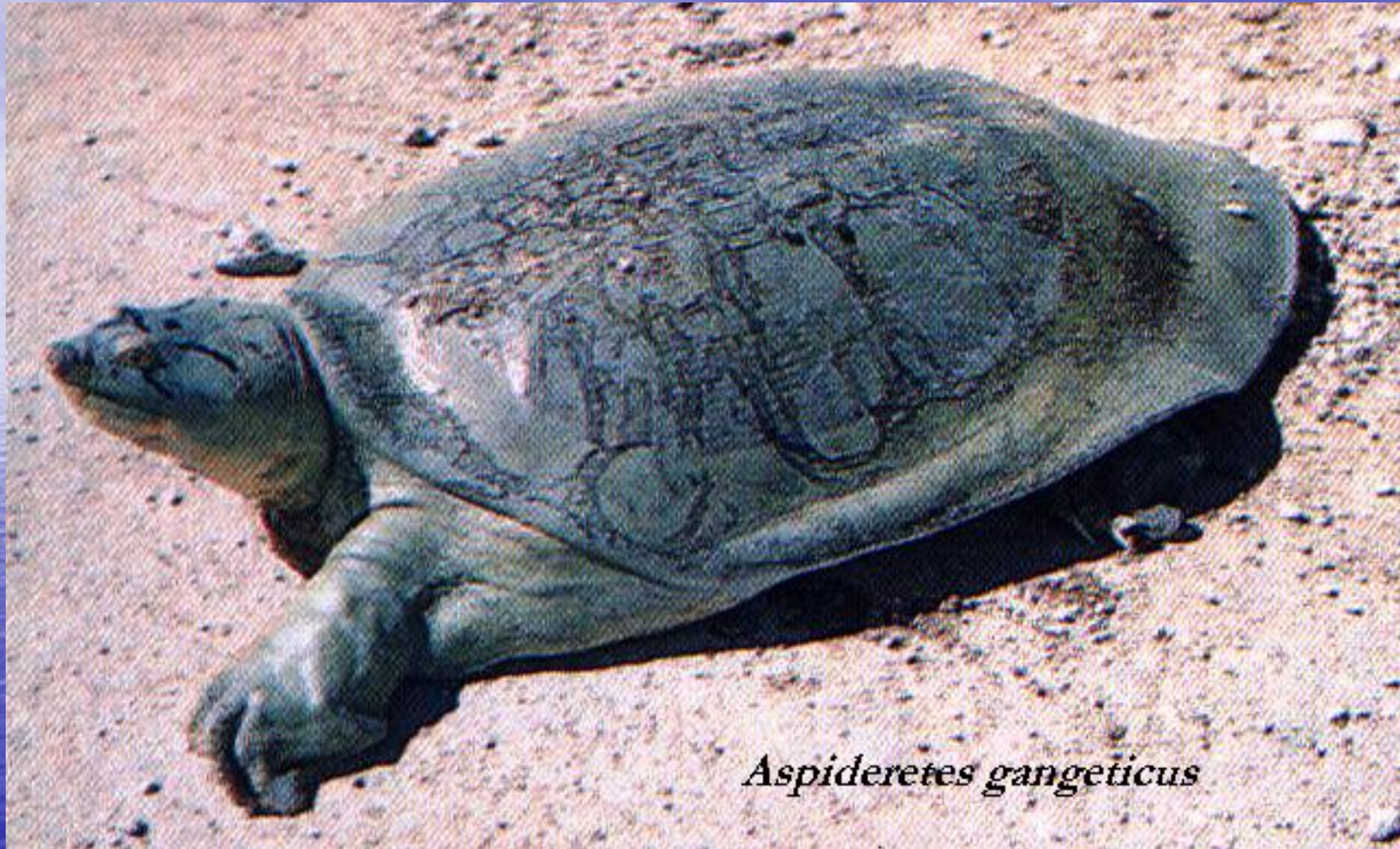


Pangshura tectum (Bell in: Gray, 1831)



Pangshura smithii (Gray, 1863)

Family TRIONYCHIDAE
Genus *Nilssonia*

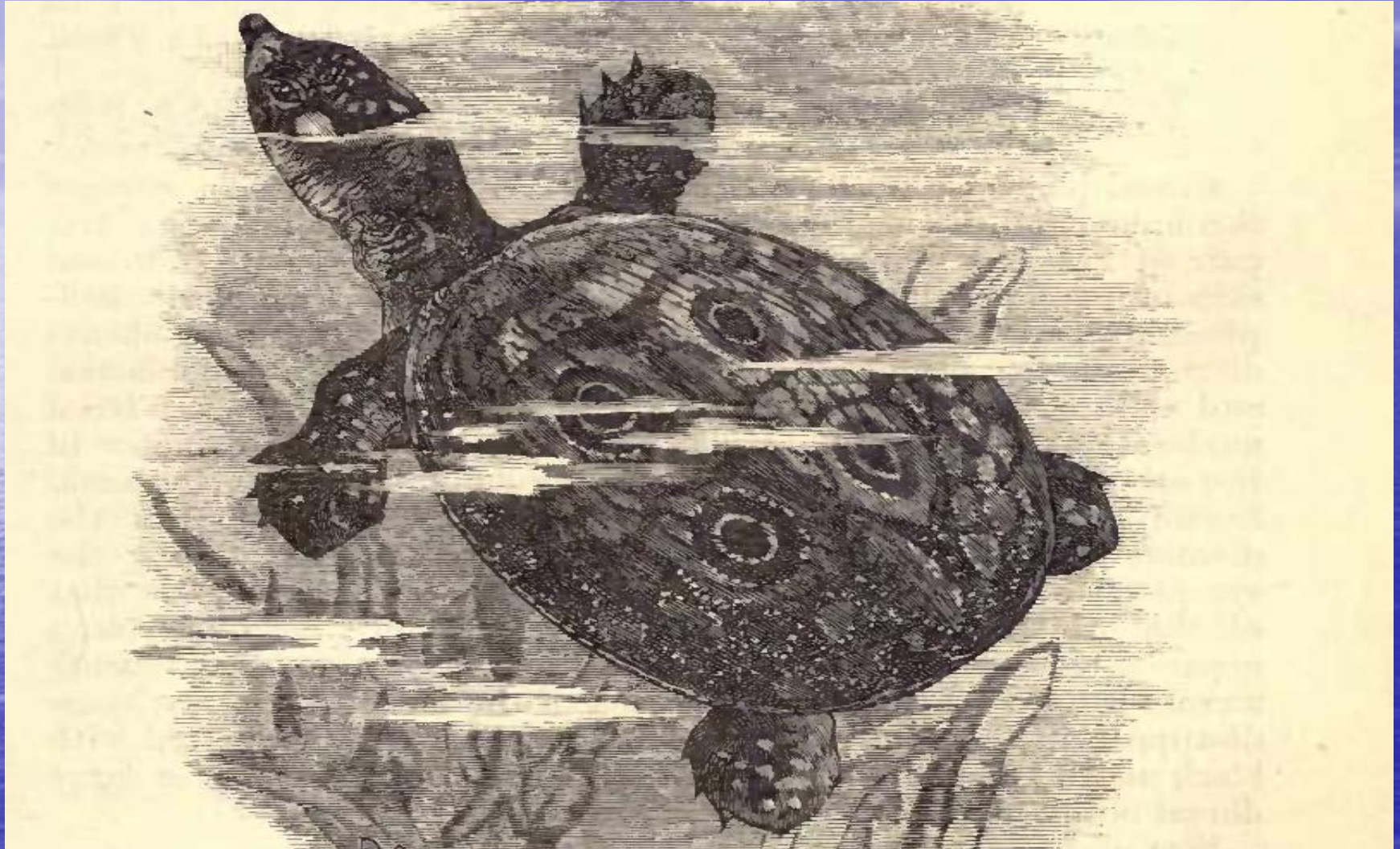


Aspideretes gangeticus

Nilssonia gangeticus (Cuvier, 1825)



Nilssonia hurum (Gray, 1831)



Chitra indica (Juvenile)

Genus *Chitra*



Chitra indica (Gray, 1831)

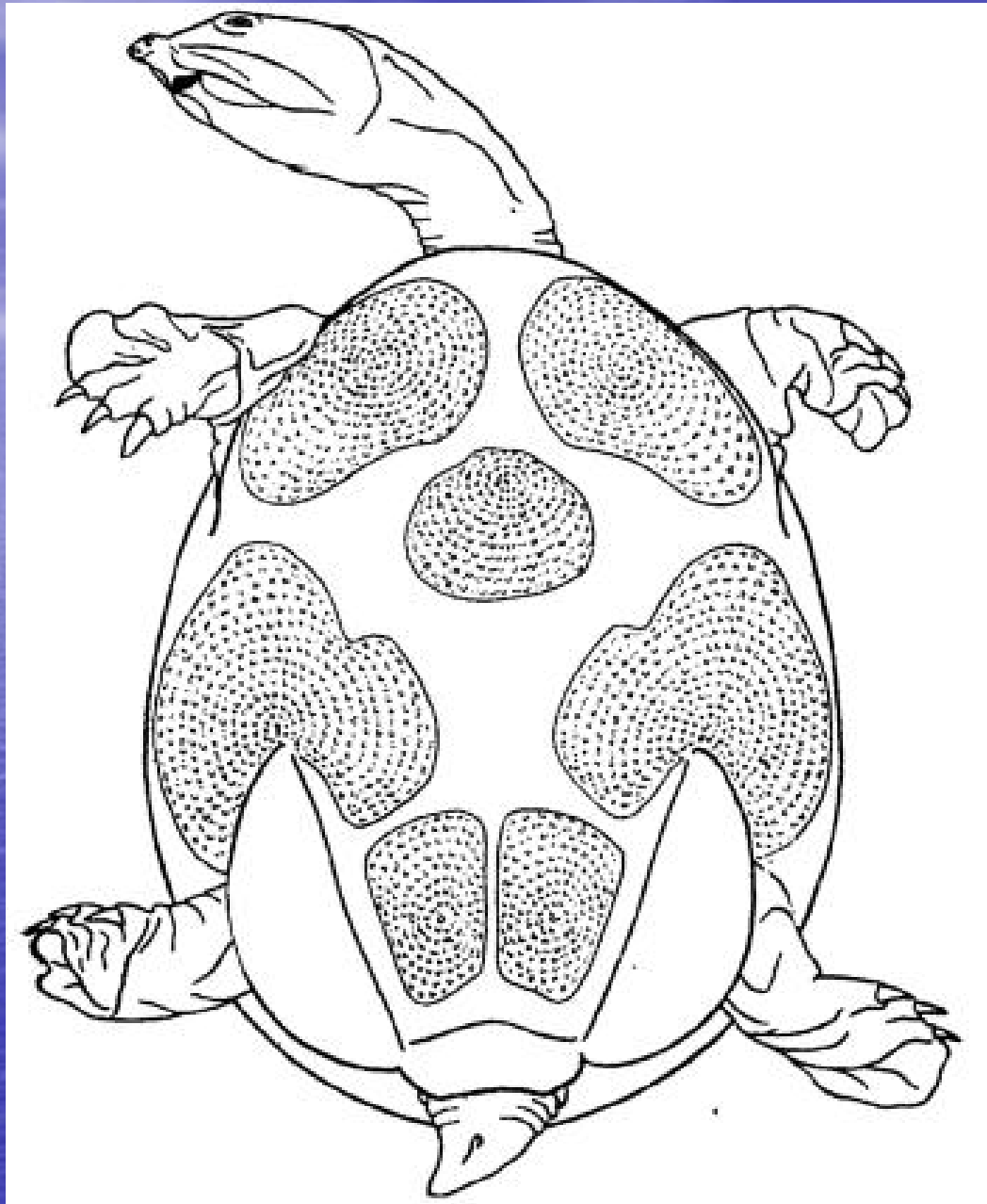


Chitra indica (Gray, 1831)

Genus *Lissemys*



Lissemys punctata andersoni Webb, 1980

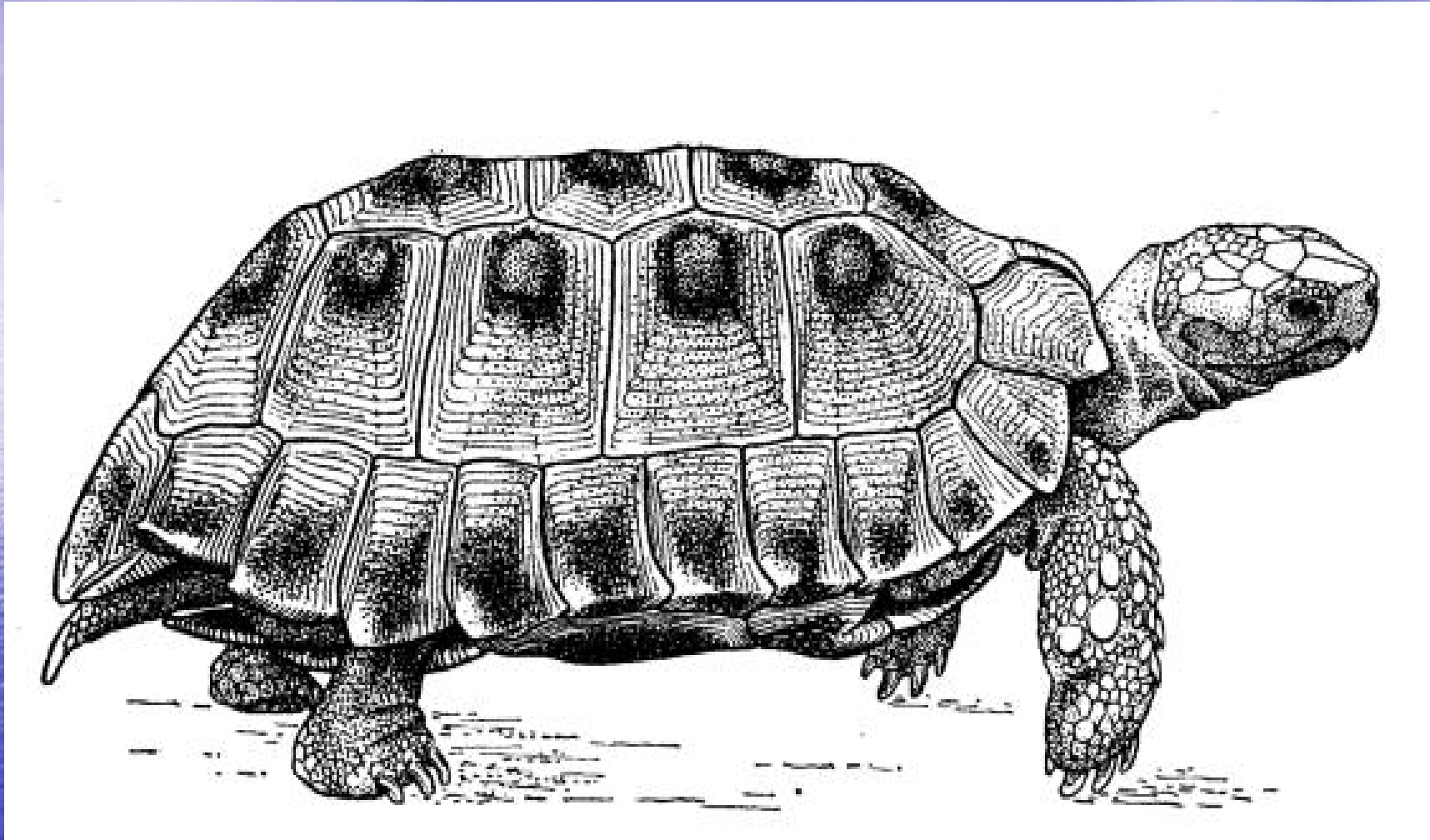


Lissemys punctata andersoni (ventral side)

Family *TESTUDINIDAE*
Genus *Testudo*



Testudo horsfieldii (Gray, 1844)



Testudo horsfieldii (Gray, 1844)

Genus Geochelone



Geochelone elegans (Schopff, 1795)

Family CROCODYLIDAE
Genus *Crocodylus*

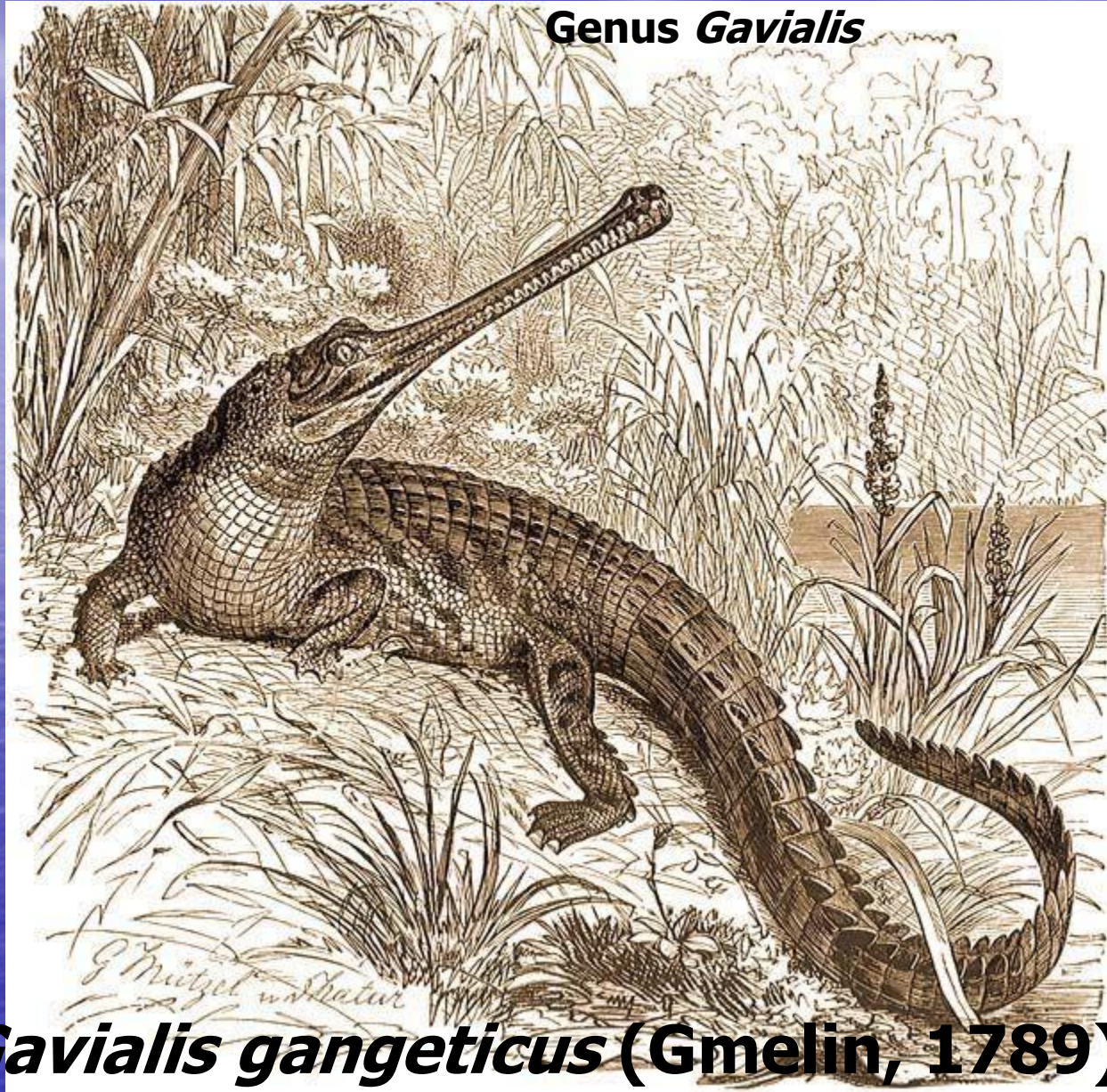


***Crocodylus palustris* Lesson, 1831**

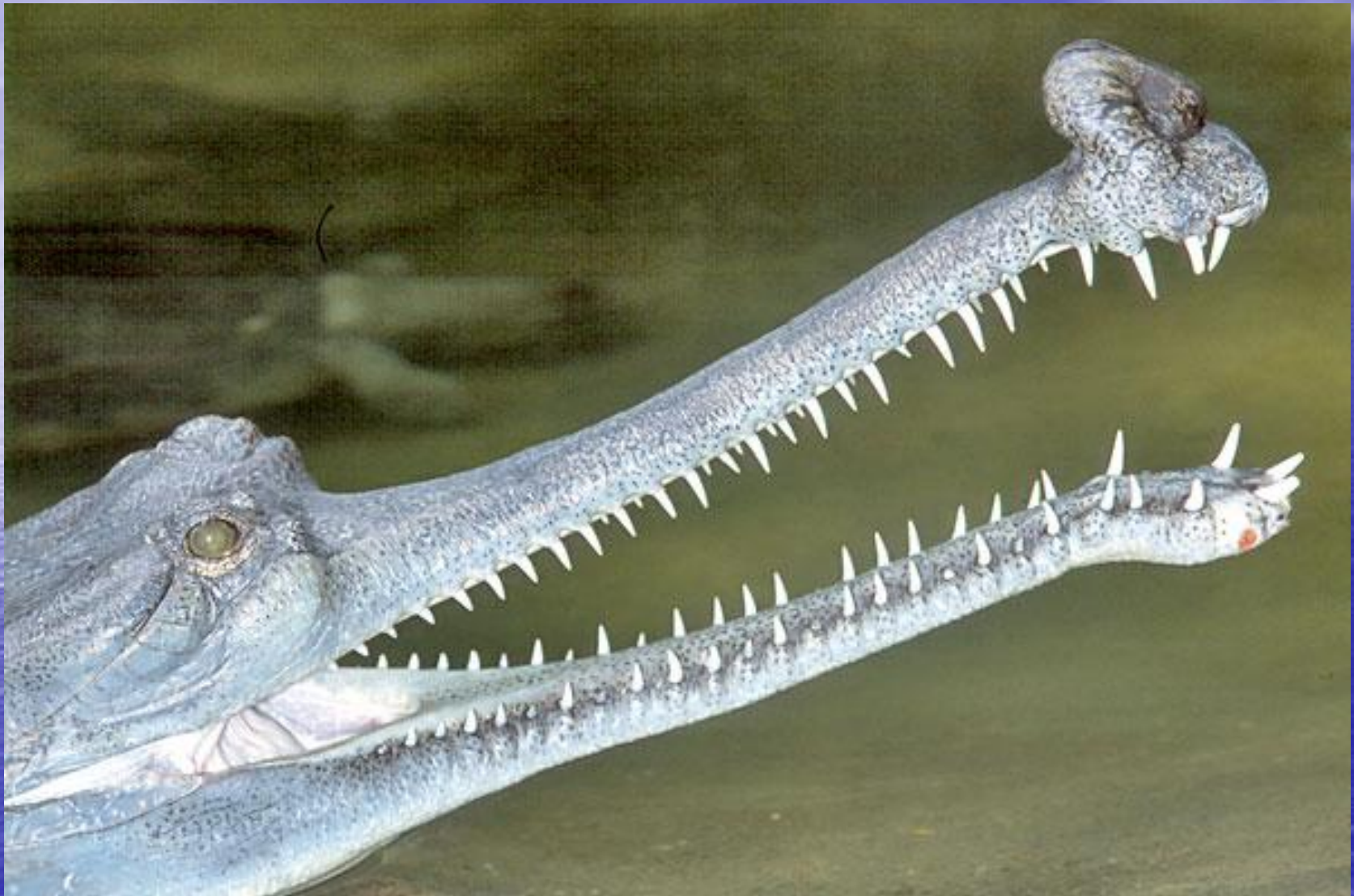


Family GAVIALIDAE

Genus *Gavialis*



***Gavialis gangeticus* (Gmelin, 1789)**



Male, with snout thickening (ghara)

AMPHIBIANS AND REPTILES OF PAKISTAN



Muhammad Sharif Khan
Krieger Publishing Co. USA, 2006

SAVE WILDLIFE IN PAKISTAN

Wildlife is irreplaceable Wealth + Allah's Gift to humanity

Any QUESTION

?

typhlops99@hotmail.com

typhlops2004@hotmail.com

HERPETOLOGICAL LABORATORY